

Good afternoon and welcome to our Member States briefing on CERF activities in 2013.

So far this year, CERF has allocated more than US\$367 million from the Rapid Response and the Underfunded windows to emergencies and neglected crises. I will update you on this year's country reviews under CERF's Performance and Accountability Framework. It is an important tool to help us assess the added value of CERF to humanitarian operations around the world.

But first, I want to highlight some of the more significant allocations made so far this year.

Syria: Needs grow as winter looms



Syrians are going through an unprecedented humanitarian crisis. More than 5 million people are currently displaced within their country and another 2 million are seeking refuge in neighbouring countries.

To help humanitarian agencies in the region keep pace with growing needs, I have just allocated \$50 million to this crisis - the largest-ever single contribution to a single crisis.



Twenty million dollars of this money will support aid operations inside Syria, \$15 million will go to scale up efforts in Lebanon, another \$10 million is intended to help the recent influx of Syrian refugees in Iraq and the remaining \$5 million will boost humanitarian programmes in Jordan.

CERF had already provided more than \$31 million for UN efforts in Syria and neighbouring countries earlier this year. This recent allocation brings the total to \$134 million since the conflict began in 2011.

CERF response to polio outbreak in the Horn of Africa

To fight the outbreak of polio, CERF released:

- \$2 million to WHO and UNICEF in Yemen
- More than \$1,5 million to WHO, UNICEF and UNHCR in Kenya
- \$1.4 million to WHO in Somalia

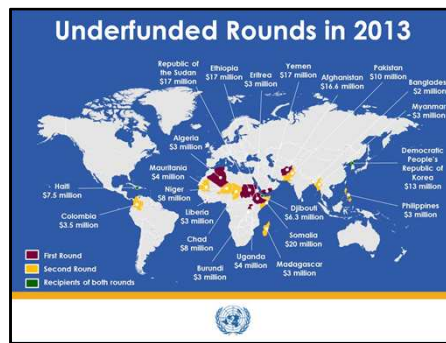


In May, there was a major polio outbreak in Somalia, putting millions of people across the Horn of Africa at risk. I therefore allocated almost \$5 million to help more than 5 million children in Somalia, Kenya and Yemen.

In Somalia itself, CERF's response enabled emergency vaccination campaigns targeting more than two million children in South-Central Zone, Puntland and Somaliland.

And in Kenya, thanks to CERF funds, humanitarian agencies conducted emergency vaccination campaigns for 900,000 children in high-risk areas in Northern Kenya, including the Dadaab and Kakuma refugee camps.

Yemen was also at risk from the virus because of the high numbers of migrants and refugees arriving from Somalia, as well as decreased immunization coverage over the past two years. Humanitarian agencies there used CERF funding to conduct emergency vaccination campaigns in seven governorates in the coastal and high-risk areas to reach an estimated 2.5 million children.



So far, 2013 has been an exceptional year for allocations to lower-profile emergencies through the Underfunded Emergency window. A growing number of people around the world are in need this year, and humanitarian operations are struggling to meet the demand. I decided to allocate \$175 million - the most ever -- during the two underfunded rounds.

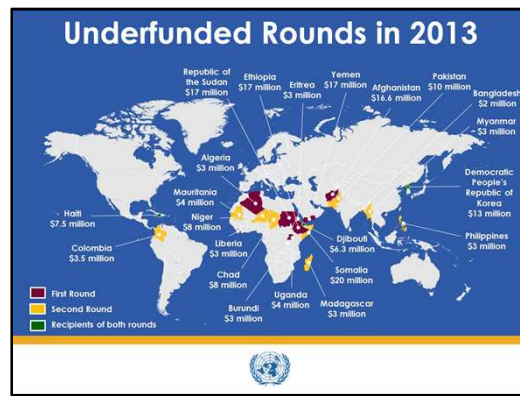
During the first round, I allocated \$100 million to 12 countries. Currently, we are disbursing another \$75 million to 13 countries. As you will see from the slide, underfunded allocations have gone to humanitarian responses in virtually every region. Three countries - Djibouti, the DPR Korea and Haiti - received allocations from both rounds because of continued funding shortfalls.

No matter how small the allocation, it still makes an impact.

- **For example, in Haiti, cholera continues to claim lives and the risk of new cases is likely to increase during the rainy season. With a CERF allocation of \$1.5 million, humanitarian partners will be able to respond quickly to outbreaks and provide the necessary treatment to save lives. This small allocation focuses on the most urgent needs while complementing the Secretary-General’s larger initiative to support the National Plan for the Elimination of Cholera in Haiti.**
- **The largest allocation, \$20 million, will provide life-saving services to people affected by insecurity, displacement and drought in Somalia. Although the humanitarian situation has improved in 2013, the Somalia crisis remains one of the largest and most complex in the world. One million people still can’t meet their basic needs without help, and another 1.7 million people could slip back into crisis without sustained support.**

Text on underfunded continues on the next page.

Same slide.



Other disbursements during the underfunded emergency rounds include:

- **A \$3 million allocation to Algeria to support the longstanding Sahrawi refugee operation.**
- **\$8 million went to support communities in Chad as well as refugees from the Central African Republic and Sudan.**

Though significant, CERF funding can only address a portion of the requirements and can act as a catalyst for programming.

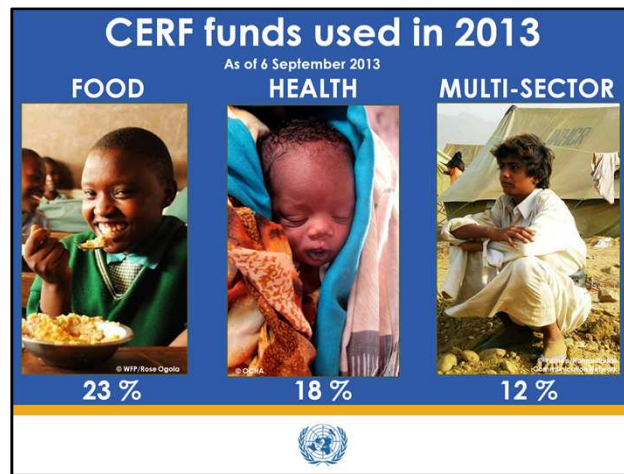
I recognize that Member States and others are providing unparalleled support to humanitarian emergencies this year. However, more is needed, particularly in these protracted crises that have fallen out of the spotlight.



I would like to give you a breakdown of the impact of CERF funds, both in emergencies and neglected crises. The top five recipients of CERF funding for the first eight months of 2013 are:

- **First, Sudan, where a \$42 million in CERF funding to humanitarian agencies is providing life-saving food assistance to the people affected by the fighting in Blue Nile State, South Kordofan and Darfur.**
- **Second, Syria, as I mentioned earlier.**
- **Third, humanitarian agencies in Yemen received almost \$19 million, to address the needs of people affected by fighting in the north and displaced people returning to their homes in the south.**
- **Fourth, in Ethiopia, humanitarian agencies received over \$18 million to respond to a yellow fever outbreak and to address acute malnutrition.**
- **And fifth, nine United Nations agencies in Mali received almost \$18 million to respond to the humanitarian needs there resulting from both insecurity and the ongoing food and nutrition crisis.**

WFP remains our biggest recipient, followed by UNICEF and UNHCR.



If we look at the breakdown of CERF funds by sector,

- **The food sector accounts for the largest portion of CERF allocations. These funds help provide life-saving food assistance in countries such as Sudan, Ethiopia, Bangladesh, Pakistan, Guinea-Bissau and Mali.**
- **The health sector is the second-largest recipient. CERF funds were allocated to combat outbreaks of measles in the DRC, cholera in Haiti and the Republic of Congo, and other health crises throughout the world.**
- **CERF's multi-sector allocations usually address IDP and refugee needs, from household goods, to water and sanitation and healthcare programmes. These have covered assistance to refugees from Mali, Syria, the Central African Republic and the Democratic Republic of the Congo. These multi-sector allocations are the third-largest recipient of CERF funds.**

So far this year, CERF has contributed some \$15 million toward protection activities like child-friendly and women-friendly spaces in Pakistan and protection monitoring in Central African Republic. I have allocated funds to UNICEF, UNFPA and UNHCR to prevent and respond to protection violations, exploitation and abuse.



In 2013, six countries were reviewed by independent humanitarian experts under CERF's Performance and Accountability Framework to assess CERF's added value in responding to humanitarian crises. Yemen, Pakistan and the DRC were reviewed individually, while Burkina Faso, Senegal and Niger were included in a review of CERF's contribution to the response to the food and nutrition crisis in the Sahel. The most important findings confirm CERF's value:

- **In the Sahel, CERF was among the earliest sources of substantial funding to respond to the drought in Burkina Faso, Senegal and Niger. CERF's response was even faster in areas where agencies had advance mechanisms in place. The experts also found that by developing requests at the country level, agencies were able to prioritise and mobilise funds to address the most urgent needs.**
- **In Yemen, the review concluded that CERF added value to humanitarian operations by supporting a quick response to acute emergencies, by enabling agencies to leverage other donor funding and by complementing other funding sources.**
- **The review of Pakistan found that the humanitarian community views CERF as a first responder with a proven record of providing timely and much-needed assistance to a variety of humanitarian crises.**

*Text on Performance and Accountability continues on the next page.
Same slide*



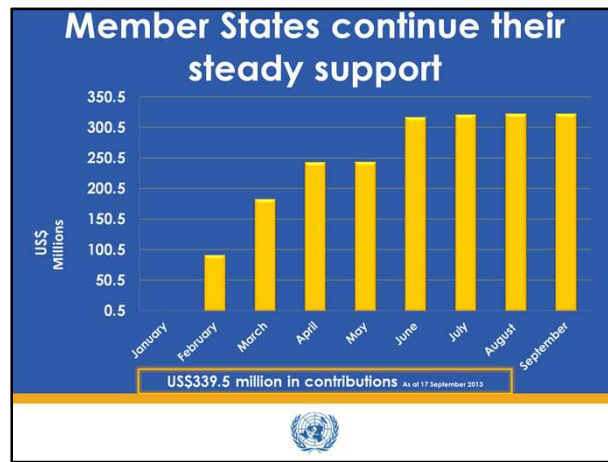
- **In the Democratic Republic of the Congo, the review determined that CERF allocations helped to strengthen the role of clusters, foster coordination and joint action on specific issues and fill funding gaps. The review also noted that without CERF, several UN agencies would have a limited presence outside Kinshasa.**

The four reviews noted that there are continued challenges with reporting on results. I have therefore decided to introduce a new reporting schedule from next year which should lead to a lighter workload and higher-quality reports.

I also look forward to receiving the results of a review of CERF's Performance and Accountability Framework. The review looked at three years of use and examined options aimed at strengthening CERF's accountability and performance systems.

Our next Advisory Group meeting will discuss the country reviews and the Performance and Accountability Framework, which will be available on the CERF website.

The meeting will also close the Management Response Plan to the five-year evaluation, since it has been successfully implemented.



CERF was off to a strong start in 2013, with pledges totalling \$383 million during the High-level Pledging Conference. This amount was nearly \$9 million more than the amount pledged during the 2012 High-level Pledging Conference. Of the \$428 million pledged to date, 77 per cent has materialized as contributions.

A relatively small number of donors continue to supply the bulk of CERF’s funding; we are grateful for this continued strong support and we will continue to engage with our most reliable donors. However, to reach the \$450 million target mandated by the General Assembly, we need broader support among Member States, particularly through multi-year commitments. One of the avenues we are exploring is how to tap into contributions from the private sector so that we can further diversify our donor pool.

I believe these strategies will allow CERF to sustain the funding levels necessary to meet the high demands for humanitarian assistance.



Before I conclude, I would like to thank all the members of the CERF Advisory Group for their support and counsel. I would especially like to thank the six members who just concluded their three-year terms.

I extend a warm welcome to the new members of the CERF Advisory Group. During the last few years, we have received many high-calibre nominations and this year was no exception. We received more than two dozen applications and the competition was exceptionally tough. It was important to the Secretary-General to ensure that balance was maintained on gender and geography, and between donors and recipients.

The Secretary-General announced six new members to serve in their individual capacity for three-year terms. They are:

- **Mr. Brouz Ralph Enneric Coffi from Côte d'Ivoire,**
- **Ms. Jette Michelsen from Denmark,**
- **Dr. Eltje Aderhold from Germany,**
- **Dr. Ahmed Al-Meraikhi from Qatar,**
- **Mr. Jozef Andriessen from the Netherlands and**
- **Dr. Julius Oketta from Uganda.**

The next Advisory Group meeting is taking place on 4 and 5 November in New York, and I look forward to meeting the new members.

Thank you and I am happy to take any questions you may have.