



CERF TRAINING

A SOUND HUMANITARIAN INVESTMENT
THE CENTRAL EMERGENCY RESPONSE FUND

Roles and Responsibilities



CERF process aligned with humanitarian reform

**Timely and
predictable
financing**

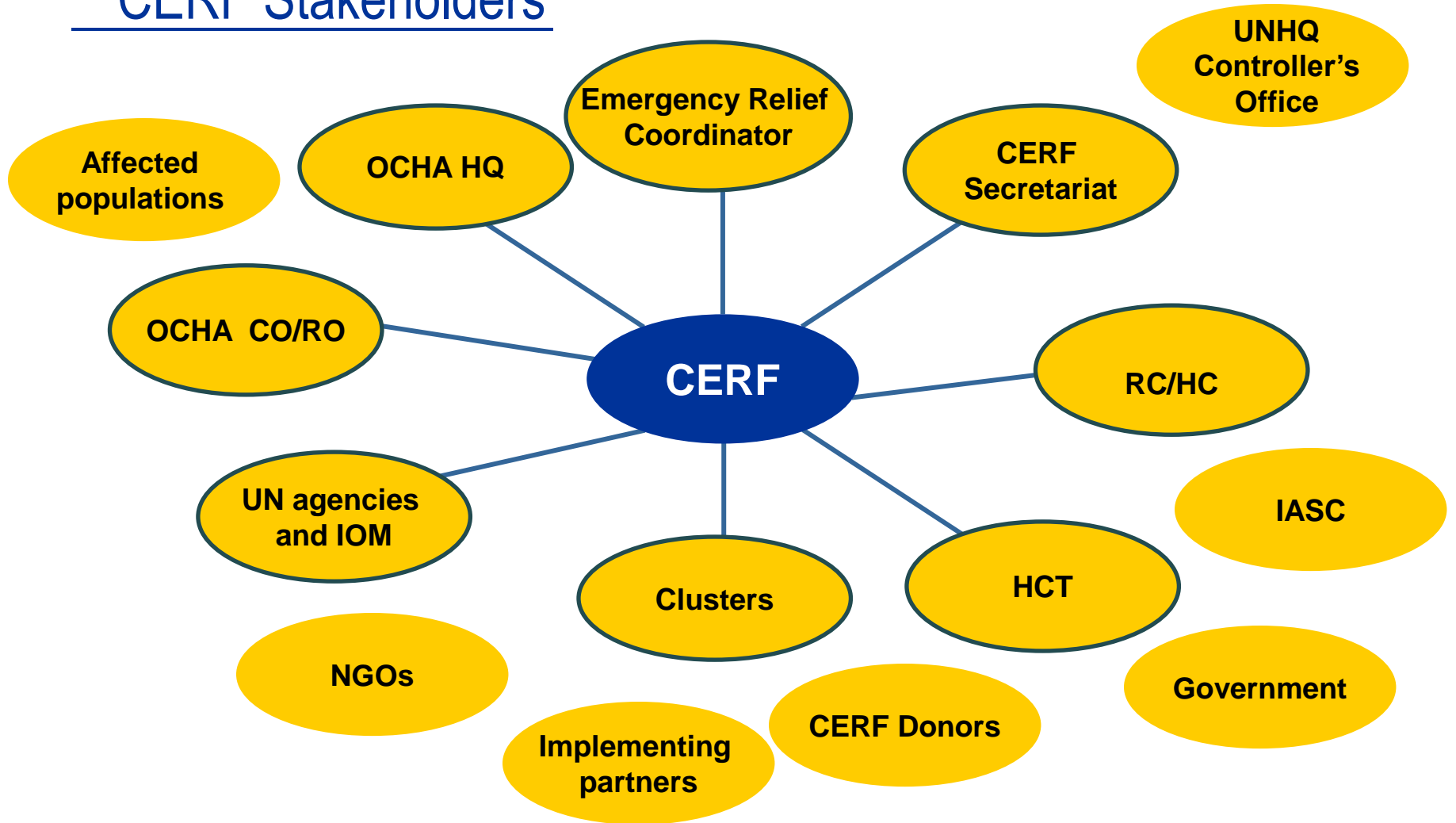
**RC/HC
leadership**

**Cluster
approach**

**Partnership
building**



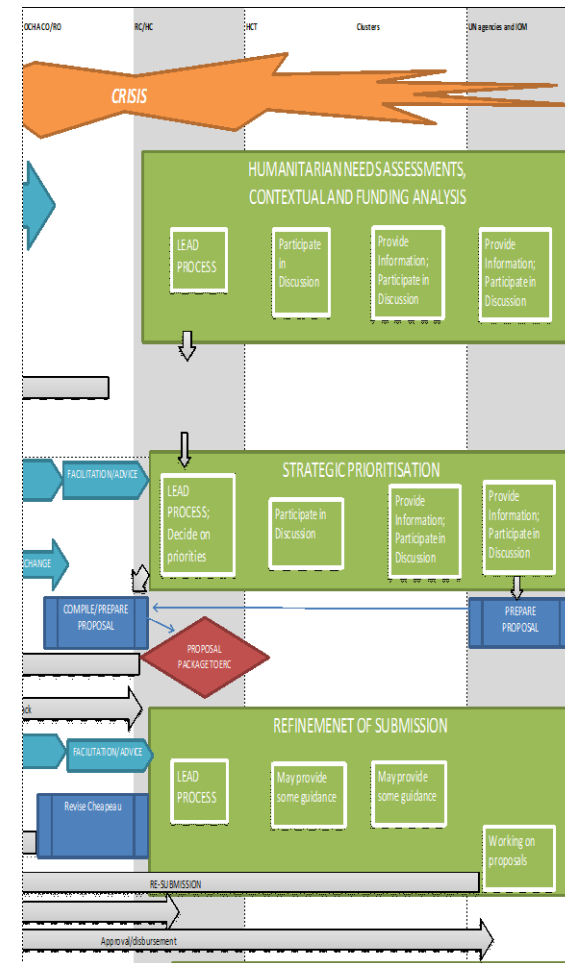
CERF Stakeholders





Roles in the CERF process...

- Can the relationships and interactions in the CERF process be more effectively managed?
- What obstacles or difficulties have to be overcome in the rapid response environment?
- In the underfunded context?





Challenges in carrying out the CERF process (from surveys)

- Overwhelmed by time leading to quick fixes using generic prioritisation
- Thinking of the CERF as a 'donor' to fulfil a funding shortage
- Strong competition among Agencies and sector leads
- Pressure from agencies on the HC for maximum amounts
- Not inclusive enough of NGOs/partners
- Financial needs greater than funding available
- Insufficient information on other funding sources
- Keeping firm on the prioritised plan in the project allocations



Exercise, Part 1

- Work together by role
- Refer to the process map
- To carry out your role effectively what key interactions must you have with other entities during the CERF process?
- Task:
 - Where are the challenges in your interactions with those key others?
 - » Work process
 - » Communication
 - » Collaboration



Exercise, Part 2

- ‘Needs’ and ‘Offers’
 - Thinking about the challenges you identified, propose what your entity needs and what you can provide—your offers—to address the challenges.
 - Write the ‘offers’ and ‘needs’ to other entities on cards.
 - Exchange the cards
 - Each group reviews the ‘needs’ and ‘offers’ it receives.