

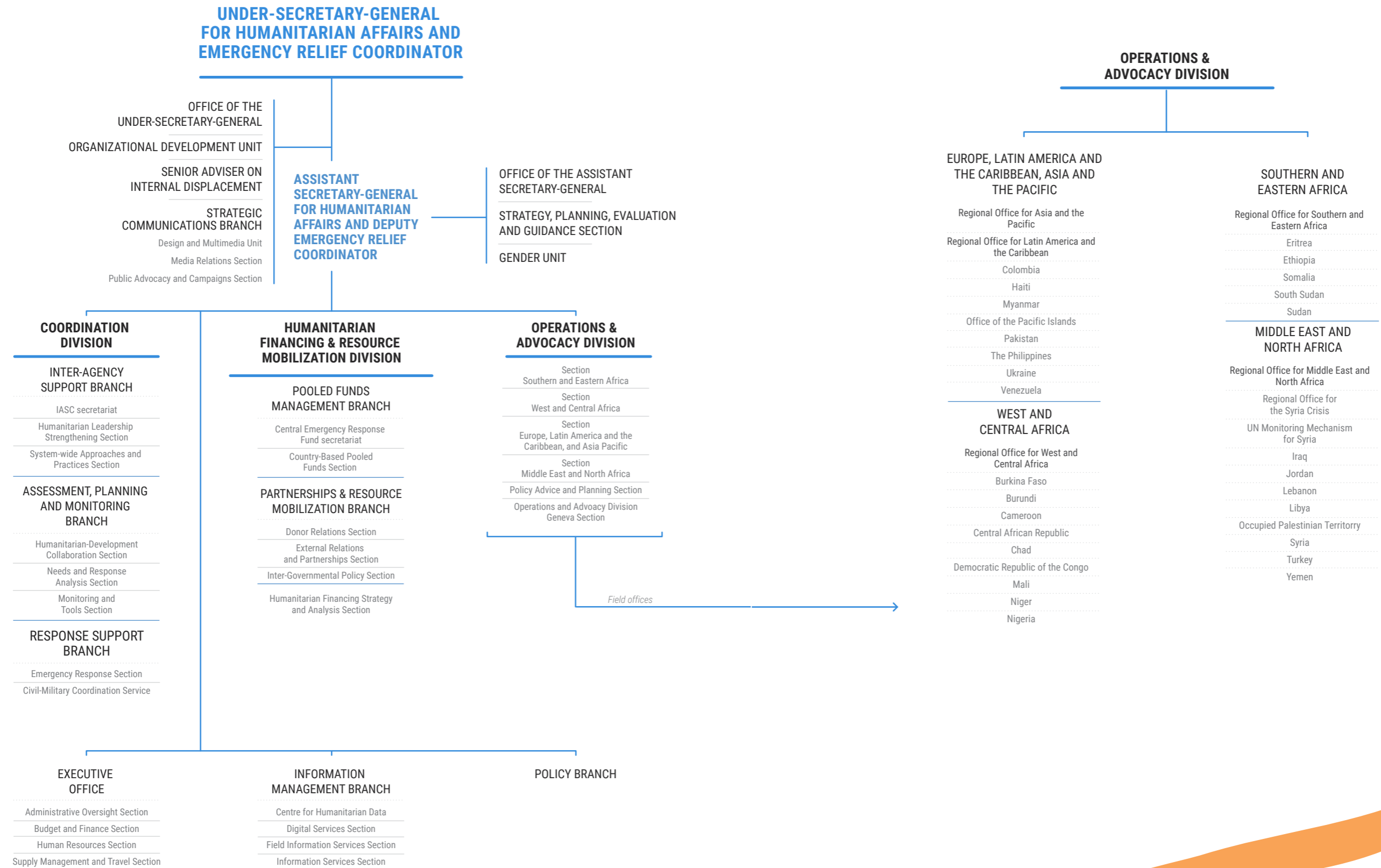


ANNEXES

Acronyms

AAP	Accountability to affected people	ROSC	Regional Office for the Syria Crisis
CAR	Central African Republic	ROSEA	Regional Office for Southern and Eastern Africa
CBi	Connecting Business initiative	ROWCA	Regional Office for West and Central Africa
CBPFs	Country-Based Pooled Funds	SEA	Sexual exploitation and abuse
CERF	Central Emergency Response Fund	SGBV	Sexual and gender-based violence
DRC	Democratic Republic of the Congo	UNCT	UN Country Team
ERC	Emergency Relief Coordinator	UNDAC	United Nations Disaster Assessment and Coordination
FAO	Food and Agriculture Organization	UNDP	United Nations Development Programme
GAM	Gender with Age Marker	UNFPA	United Nations Population Fund
GBV	Gender-based violence	UNHCR	Office of the United Nations High Commissioner for Refugees
GENCAP	Gender Standby Capacity Project	UNICEF	United Nations Children's Fund
GHRP	Global Humanitarian Response Plan	UNV	United Nations Volunteer
HAT	Humanitarian Advisory Team	WFP	World Food Programme
HC	Humanitarian Coordinator	WHO	World Health Organization
HCT	Humanitarian Country Team	XB	Extrabudgetary
HPC	Humanitarian Programme Cycle		
HRP	Humanitarian Response Plan		
IAHE	Inter-Agency Humanitarian Evaluation		
IASC	Inter-Agency Standing Committee		
IDP	Internally displaced person		
IM	Information Management		
IMO	Information Management Officer		
INSARAG	International Search and Rescue Advisory Group		
IOM	International Organization for Migration		
IPC	Integrated Food Security Phase Classification		
JPO	Junior Professional Officer		
MHPSS	Mental health and psychosocial support		
NGO	Non-governmental organization		
NSAG	Non-State armed group		
OCHA	United Nations Office for the Coordination of Humanitarian Affairs		
ODSG	OCHA Donor Support Group		
PROCAP	Protection Standby Capacity Project		
PSEA	Preventing sexual exploitation and abuse		
RC	Resident Coordinator		
ROAP	Regional Office for Asia and the Pacific		
ROLAC	Regional Office for Latin America and the Caribbean		
ROMENA	Regional Office for the Middle East and North Africa		

OCHA Organization Chart



Financial tables

DONOR INCOME OVERVIEW - PAID + PLEDGED

DONORS RANKED BY TOTAL FUNDING IN 2020 (US\$ MILLION)

	2018				2019				2020						
	OCHA programme	CBPFs	CERF	Total	OCHA programme	CBPFs	CERF	Total	OCHA programme	CBPFs	CERF	Total			
Germany	14.55	175.66	110.20	300.41	16.85%	18.35	167.18	106.00	291.53	14.20%	24.82	223.02	125.33	373.16	21.1%
United Kingdom	35.07	252.97	114.57	402.61	22.58%	30.88	320.23	386.10	737.22	35.90%	35.57	182.83	87.38	305.78	17.3%
Sweden	37.18	93.67	88.20	219.05	12.28%	34.67	89.85	88.94	213.46	10.39%	31.69	69.03	88.83	189.55	10.7%
Netherlands	5.68	81.24	67.90	154.82	8.68%	7.66	62.67	62.50	132.83	6.47%	7.66	75.40	98.79	181.85	10.3%
Norway	15.10	45.79	54.45	115.34	6.47%	14.68	44.62	54.71	114.02	5.55%	14.73	42.69	56.91	114.33	6.5%
Belgium	4.52	45.11	13.57	63.20	3.54%	6.61	48.16	18.95	73.72	3.59%	7.36	52.25	24.28	83.88	4.7%
Denmark	4.97	40.54	21.62	67.13	3.76%	4.57	46.04	25.81	76.43	3.72%	10.68	33.99	30.79	75.46	4.3%
Canada	9.44	14.77	22.53	46.74	2.62%	10.06	19.94	22.53	52.53	2.56%	10.52	36.73	22.53	69.79	4.0%
United States *	51.21	34.00	-	85.21	4.78%	54.99	31.25	-	86.24	4.20%	50.20	10.00	-	60.20	3.4%
Switzerland	6.68	20.80	6.24	33.72	1.89%	6.92	23.67	6.91	37.51	1.83%	7.88	28.16	24.04	60.08	3.4%
Ireland	3.81	46.85	14.25	64.91	3.64%	3.72	35.47	11.39	50.58	2.46%	4.28	35.23	11.42	50.93	2.9%
Australia	8.24	16.25	8.18	32.67	1.83%	7.22	15.24	8.21	30.67	1.49%	7.22	13.78	8.18	29.18	1.7%
Finland	3.79	-	8.64	12.43	0.70%	2.81	-	8.98	11.78	0.57%	2.81	1.17	15.46	19.44	1.1%
Korea, Republic of	1.70	5.30	4.00	11.00	0.62%	1.70	7.80	5.00	14.50	0.71%	2.20	11.05	5.82	19.07	1.1%
France	1.21	6.60	-	7.81	0.44%	3.36	11.48	-	14.84	0.72%	3.53	12.94	1.14	17.61	1.0%
European Commission	16.74	-	-	16.74	0.94%	14.63	-	-	14.63	0.71%	12.84	4.40	-	17.24	1.0%
Qatar	10.00	3.47	1.00	14.47	0.81%	10.00	3.50	1.00	14.50	0.71%	10.36	5.20	1.00	16.56	0.9%
Italy **	0.59	2.88	2.96	6.42	0.36%	1.10	5.54	3.93	10.57	0.51%	0.75	9.10	5.50	15.34	0.9%
New Zealand	3.46	0.67	2.20	6.33	0.35%	3.42	2.34	2.04	7.80	0.38%	3.42	3.49	8.34	15.24	0.9%
Luxembourg	1.01	2.96	4.94	8.91	0.50%	0.98	3.57	5.47	10.02	0.49%	0.99	4.15	5.47	10.60	0.6%
Spain	2.72	2.54	3.49	8.74	0.49%	3.58	3.18	3.41	10.17	0.50%	4.15	2.87	3.41	10.43	0.6%
United Arab Emirates	4.62	25.00	1.50	31.12	1.75%	1.75	-	5.00	6.75	0.33%	2.00	-	5.00	7.00	0.4%
Japan	6.07	-	1.36	7.43	0.42%	5.82	0.40	0.68	6.90	0.34%	5.65	-	0.26	5.92	0.3%
Austria	0.67	-	-	0.67	0.04%	1.20	-	-	1.20	0.06%	1.32	-	1.22	2.54	0.1%
Russian Federation	1.00	-	1.50	2.50	0.14%	0.97	-	1.50	2.47	0.12%	1.00	-	1.50	2.50	0.1%
Iceland	-	-	-	-	-	0.21	0.41	0.47	1.09	0.05%	0.50	0.96	0.71	2.17	0.1%
Poland	0.52	-	-	0.52	0.03%	0.51	0.50	-	1.01	0.05%	0.75	-	0.25	1.00	0.1%
Turkey	0.50	-	0.40	0.90	0.05%	0.50	-	0.40	0.90	0.04%	0.50	-	0.45	0.95	0.1%
Estonia	0.63	-	0.12	0.75	0.04%	0.58	0.06	0.11	0.75	0.04%	0.58	0.24	0.11	0.93	0.1%
Saudi Arabia	21.60	25.00	0.15	46.75	2.62%	15.97	-	0.15	16.12	0.78%	0.50	-	0.15	0.65	0.0%
Non ODSG	1.60	7.55	4.60	13.74	0.77%	0.97	5.54	4.44	10.95	0.53%	0.81	3.02	4.78	8.61	0.5%
GRAND TOTAL	274.86	949.62	558.58	1,783.05	100%	270.38	948.66	834.64	2,053.68	100%	267.3	861.70	639.0	1,768.0	100%

Totals include paid and pledged contributions.

Note: CBPF MPTF; source is GMS based on actual cash received while CBPF OCHA, source is OCT based on pledge value.

*Figures different from those published in previous annual reports, due to cancellation of 2018 pledge (\$127,651) and 2019 pledge (\$123,980) in 2020.

**Including the transfer of \$137,459 from Italy's pre-positioned fund to OCHA Mali office.

PROGRAMME INCOME

2020 OCHA PROGRAMME DONOR INCOME (US\$)

Donor	Earmarked	Softly Earmarked	Unearmarked	Total
United States	42,299,651	4,400,000	3,500,000	50,199,651
United Kingdom	3,184,027	-	32,386,889	35,570,916
Sweden	10,632,780	726,141	20,329,553	31,688,474
Germany	13,699,888	5,599,104	5,518,764	24,817,756
Norway	3,692,344	584,966	10,456,297	14,733,608
European Commission	11,662,981	1,177,856	-	12,840,838
Denmark	-	-	10,682,130	10,682,130
Canada	3,173,418	5,826,969	1,524,390	10,524,777
Qatar	357,995	-	10,000,000	10,357,995
Switzerland	5,753,817	-	2,125,399	7,879,215
Netherlands	-	-	7,658,643	7,658,643
Belgium	-	-	7,355,243	7,355,243
Australia	-	721,501	6,493,506	7,215,007
Japan	3,880,833	909,090	861,818	5,651,741
Ireland	639,817	-	3,638,570	4,278,387
Spain	643,275	3,508,772	-	4,152,047
France	1,103,753	-	2,428,256	3,532,009
New Zealand	-	-	3,415,301	3,415,301
Finland	-	-	2,805,836	2,805,836
Korea, Republic of	200,000	-	2,000,000	2,200,000
United Arab Emirates	500,000	-	1,500,000	2,000,000
Austria	1,216,545	-	107,059	1,323,604
Russian Federation	-	-	1,000,000	1,000,000
Luxembourg	113,636	-	873,680	987,316
Poland	748,390	-	-	748,390
Italy *	745,731	-	-	745,731
Estonia	303,532	110,375	165,563	579,470
Iceland	-	-	500,000	500,000
Saudi Arabia	-	-	500,000	500,000
Turkey	-	-	500,000	500,000
Romania	303,398	-	-	303,398
Greece	220,751	-	-	220,751
Portugal	46,948	-	-	46,948
Monaco	-	-	33,076	33,076
China	-	-	30,000	30,000
Malta	-	27,594	-	27,594
Latvia	-	23,895	-	23,895
Singapore	-	-	20,000	20,000
Malaysia	15,000	-	-	15,000
Kazakhstan	10,000	-	-	10,000
Subtotal	105,148,510	23,616,263	138,409,972	267,174,746
Private Donations**	78,637	-	-	78,637
Subtotal	78,637	-	-	78,637
TOTAL 2020	105,227,147	23,616,263	138,409,972	267,253,383

Totals include paid and pledged contributions.

* Including the transfer of \$137,459 from Italy's pre-positioned fund to OCHA Mali office

** Funding received from UPS Foundation and Mainichi Shimbun

ALLOCATION OF UNEARMARKED CONTRIBUTIONS

ALLOCATION OF UNEARMARKED CONTRIBUTIONS IN 2020 (US\$)

HEADQUARTER	47,173,614
FIELD	85,709,209
REGIONAL OFFICE	
Regional Office for Asia and the Pacific	1,562,079
Regional Office for Latin America and the Caribbean	1,215,791
Regional Office for Southern and Eastern Africa	1,491,749
Regional Office for the Middle East and North Africa	1,083,914
Regional Office for West and Central Africa	1,331,609
AFRICA	
Burkina Faso	52,160
Burundi	742,793
Cameroon	1,414,492
Central African Republic	6,018,009
Chad	4,228,135
Democratic Republic of Congo	12,906,995
Eritrea	860,713
Ethiopia	669,778
Mali	3,609,087
Niger	2,076,880
Nigeria	3,323,965
Somalia	5,776,001
South Sudan	5,643,230
Sudan	3,297,222
ALL FIELD	
Field surge	472,079
Investigating allegations of SEA involving implementing partners	36,549
ASIA AND THE PACIFIC	
Myanmar	3,412,300
Office for the Pacific Islands	1,103,965
Pakistan	337,139
Philippines	1,400,668
Yemen	499,121
Central Asia, Pakistan and Afghanistan	7,173,701
Afghanistan	6,684,599
Pakistan	55,996
EUROPE	
Ukraine	370,821
LATIN AMERICA AND THE CARIBBEAN	
Haiti	929,545
Venezuela support	1,967,766
MIDDLE EAST AND NORTH AFRICA	
Iraq	2,568,412
Libya	2,775,644
Occupied Palestinian Territory	3,612,714
Syria	1,015,314
Syria OCHA Operation in Jordan	565,568
Syria OCHA Operation in Lebanon	231,939
United Arab Emirates	175,123
Syria, Regional Office for the Syria Crisis (ROSC)	245,339
Total allocated in 2020	132,882,823
With flexible implementation carried through 2021	23,318,008
GRAND TOTAL	156,200,832

Note: The difference of \$17.8M, between unearmarked income of 2020 (\$138.4M) and unearmarked cash that was available for 2020 (\$156.2M) is due to: 1) exchange loss (between pledged amount and cash received amount), 2) donor pledged but not paid yet, 3) 2019 pledge but cash received in 2020 and 4) carry over from 2019.

FINANCIAL STATUS

OCHA FINANCIAL STATUS AS OF 31 DECEMBER 2020 (US\$)

OCHA-Mandated Programme and Administrative Activities	Programme Activities (a.)	CBPF Humanitarian Financing Units (b.)	Total Trust fund excluding CBPF grants-out (a+b)	Administrative Activities	Regular Budget
Opening Balance - 1 Jan 2020	182,899,123	5,458,942	188,358,065	-	-
2020 Donor Contributions for Programme Activities ¹	267,253,383	15,503,636	282,757,018	-	-
2020 Income for Administrative Activities (Transfer of Programme Support Charges) ²	-	-	-	35,569,896	-
2020 Allocation for Regular Budget	-	-	-	-	18,063,100
Available Funds	450,152,505	20,962,577	471,115,083	35,569,896	18,063,100
Transfer of Programme Support Charges (PSC)	-17,205,108	-1,477,065	-18,682,173		
Direct Expenditure ³	-254,575,683	-21,074,547	-275,650,230	-34,382,153	-17,000,708
Total Expenditure Charged against⁴	-271,780,791	-22,551,612	-294,332,403	-34,382,153	-17,000,708
Net Available Funds before Other Income, adjustments, transfers, refunds	178,371,714	-1,589,034	176,782,680	1,187,743	1,062,392
Other income, adjustments, transfers, refunds	12,867,009	13,312,737	26,179,746	-	-
Closing Balance⁵	191,238,723	11,723,702	202,962,426	-	-
<i>Increase / (Decrease) in opening balance</i>	<i>8,339,601</i>	<i>6,264,761</i>	<i>14,604,361</i>	<i>-</i>	<i>-</i>
AVAILABLE BALANCE FOR SPENDING	191,238,723	11,723,702	202,962,426	-	-

¹ For programme activities, includes paid contributions and unpaid pledges \$5.06M.

² Transfer of PSC for Administrative Activities, includes PSC levied from programme activities, CBPFs, and Specially Designated Contributions as well.

³ Includes disbursements and unliquidated obligations as at 31 December 2020.

⁴ For programme activities, expenditure charged against budget is the direct programme expenditure plus programme support transfers. For administrative and regular budget activities, it is the direct expenditure only.

⁵ As of June 2015, PSC balances have been consolidated under one single PSC account for all Volume 1 entities under the Central Control of the UN Controller.

Note: CERF PSC is not included since 2019 CERF PSC opening balance is not yet confirmed by UNHQ.

IN-KIND CONTRIBUTIONS

IN-KIND CONTRIBUTIONS (US\$)

Entity	Description	US\$
UNHCR	Technical assistance/expert services	109,650
FAO	Technical assistance/expert services	112,365
WFP	Technical assistance/expert services	84,102
German Academic Exchange Service	Technical assistance/expert services	32,886
Government, International Humanitarian City Dubai - UAE	Office Space	44,486 ⁶
ADRC, Kobe, Japan	Office Space	45,506
Government - Almaty, Kazakhstan	Office Space	9,000
Government - Tbilisi, Georgia	Office Space	15,000
IOM - Mosul, Iraq	Office Space	1,800
Government - Dushanbe, Tajikistan	Office Space	11,000
Government - Beirut, Lebanon	Office Space	165,301 ⁷
Government - Mishref, Kuwait	Office Space	21,300

⁶ Currency = AED

⁷ UN Habitat: \$94,350 & UNDP: \$70,951

BUDGET AND EXPENDITURE

OCHA BUDGET AND EXPENDITURE IN 2020 (US\$)	Mandated Programme Activities				Extrabudgetary Administrative Activities			
	Original	Final	Expenditure	Expend. Rate	Original	Final	Expenditure	Expend. Rate
REGULAR BUDGET ACTIVITIES	17,280,400	16,777,654	17,000,708	101%	-	-	-	-
EXTRABUDGETARY ACTIVITIES								
HEADQUARTERS								
OFFICE OF USG	610,627	574,996	333,890	58%	-	-	-	-
OFFICE OF ASG	687,206	691,188	680,948	99%	-	-	-	-
CENTRAL COSTS	1,920,313	2,032,207	1,988,583	98%	9,206,440	8,488,037	8,473,580	100%
COORDINATION	21,715,886	24,344,059	24,145,168	99%	-	-	-	-
EXECUTIVE OFFICE	-	-	-	0%	10,489,099	11,280,174	11,097,321	98%
GENDER	420,888	415,538	392,341	94%	-	-	-	-
HUMANITARIAN FINANCING AND RESOURCE MOBILIZATION DIVISION	7,668,607	7,329,212	7,200,636	98%	11,467,120	11,774,671	11,768,395	100%
IDP	3,652,964	2,478,004	2,342,244	95%	-	-	-	-
INFORMATION MANAGEMENT	9,097,057	9,360,205	9,240,258	99%	3,545,736	3,165,512	3,044,444	96%
OPERATIONS AND ADVOCACY	11,044,401	11,572,668	11,524,550	100%	-	-	-	-
ORGANIZATIONAL DEVELOPMENT	650,000	555,472	554,145	100%	-	-	-	-
POLICY	1,026,276	996,348	641,566	64%	-	-	-	-
STRATEGIC COMMUNICATIONS	4,464,718	4,765,979	4,731,598	99%	-	-	-	-
STRATEGY, PLANNING AND EVALUATION	1,813,075	1,553,315	1,418,065	91%	-	-	-	-
HEADQUARTERS Total	64,772,017	66,669,191	65,193,989	98%	34,708,395	34,708,394	34,383,740	99%
FIELD								
REGIONAL OFFICES	25,169,967	19,832,918	19,784,049	100%	-	-	-	-
Regional Office for Asia and the Pacific	5,923,987	5,267,135	5,257,940	100%	-	-	-	-
Regional Office for Latin America and the Caribbean	4,554,965	3,420,420	3,401,043	99%	-	-	-	-
Regional Office for Southern and Eastern Africa	5,494,000	4,697,792	4,691,353	100%	-	-	-	-
Regional Office for the Middle East and North Africa	3,758,016	2,666,857	2,654,689	100%	-	-	-	-
Regional Office for West and Central Africa	5,439,000	3,780,714	3,779,024	100%	-	-	-	-
COUNTRY OFFICES	172,758,909	185,259,858	184,385,428	100%	-	-	-	-
<i>AFRICA</i>	95,090,535	102,453,894	102,284,883	100%	-	-	-	-
Burkina Faso	1,300,000	1,796,984	1,788,223	100%	-	-	-	-
Burundi	1,808,000	1,772,321	1,763,420	99%	-	-	-	-
Cameroon	3,925,552	4,457,692	4,447,051	100%	-	-	-	-
Central African Republic	10,500,647	11,060,779	11,059,037	100%	-	-	-	-
Chad	5,011,006	5,303,872	5,298,635	100%	-	-	-	-
Democratic Republic of the Congo	16,631,554	18,758,491	18,744,813	100%	-	-	-	-
Eritrea	895,000	866,440	860,263	99%	-	-	-	-
Ethiopia	5,926,000	6,006,111	6,005,558	100%	-	-	-	-
Mali	5,767,000	6,214,715	6,208,008	100%	-	-	-	-
Niger	4,498,463	4,479,176	4,466,078	100%	-	-	-	-
Nigeria	8,518,911	8,184,415	8,160,648	100%	-	-	-	-
Somalia	9,086,057	11,001,598	10,944,826	99%	-	-	-	-
South Sudan	11,892,345	13,504,395	13,468,347	100%	-	-	-	-
Sudan	9,330,000	9,046,905	9,069,977	100%	-	-	-	-
<i>ASIA AND THE PACIFIC</i>	6,688,121	7,273,654	7,233,767	99%	-	-	-	-
Myanmar	4,307,110	4,491,322	4,487,775	100%	-	-	-	-
Office for the Pacific Islands	1,381,000	1,367,724	1,347,591	99%	-	-	-	-
Philippines	1,000,010	1,414,608	1,398,402	99%	-	-	-	-
<i>CENTRAL ASIA, PAKISTAN AND AFGHANISTAN</i>	10,511,576	12,322,963	12,244,168	99%	-	-	-	-
Afghanistan	9,949,691	11,204,883	11,152,002	100%	-	-	-	-
Pakistan	561,885	1,118,080	1,092,166	98%	-	-	-	-
<i>EUROPE</i>	3,725,457	3,273,768	3,260,049	100%	-	-	-	-
Ukraine	3,725,457	3,273,768	3,260,049	100%	-	-	-	-
<i>LATIN AMERICA & THE CARIBBEAN</i>	5,404,944	5,257,790	5,218,712	99%	-	-	-	-
Colombia	1,366,000	1,194,054	1,176,588	99%	-	-	-	-
Haiti	1,089,447	1,404,484	1,396,252	99%	-	-	-	-
Venezuela support	2,949,497	2,659,252	2,645,872	99%	-	-	-	-
<i>MIDDLE EAST AND NORTH AFRICA</i>	50,986,349	54,206,885	53,673,384	99%	-	-	-	-
Iraq	7,481,000	7,250,246	7,240,381	100%	-	-	-	-
Libya	4,792,006	3,829,965	3,810,756	99%	-	-	-	-
Occupied Palestinian Territory	6,645,000	7,184,044	7,177,115	100%	-	-	-	-
Syria	6,724,781	6,113,552	6,109,108	100%	-	-	-	-
Syria OCHA Operation in Jordan	1,794,000	1,434,139	1,426,730	99%	-	-	-	-
Syria OCHA Operation in Lebanon	2,116,000	2,186,627	2,184,977	100%	-	-	-	-
Syria OCHA Operation in Turkey	3,229,288	3,202,376	3,195,664	100%	-	-	-	-
Syria, Regional Office for the Syria Crisis (ROSC)	3,609,023	3,436,285	3,357,329	98%	-	-	-	-
United Arab Emirates	915,250	677,535	677,474	100%	-	-	-	-
Yemen	13,680,000	18,892,116	18,493,850	98%	-	-	-	-
<i>OAD FRONT OFFICE</i>	351,926	470,904	470,465	100%	-	-	-	-
Field surge	351,926	470,904	470,465	100%	-	-	-	-
FIELD Total	185,943,373	194,689,750	193,020,725	99%	-	-	-	-

EXTRABUDGETARY ACTIVITIES	262,700,893	271,761,967	269,363,466	99%	34,708,395	34,708,394	34,383,740	99%
CBPF MANAGEMENT UNITS	29,723,280	30,920,226	22,551,612	73%	-	-	-	-
Afghanistan - CBPF Humanitarian Financing Unit	2,241,928	2,386,319	2,009,507	84%	-	-	-	-
Central African Republic - CBPF Humanitarian Financing Unit	1,649,867	1,649,867	1,635,694	99%	-	-	-	-
Colombia - CBPF Humanitarian Financing Unit	-	-	586	0%	-	-	-	-
DRC - CBPF Humanitarian Financing Unit	4,301,931	4,719,744	2,566,579	54%	-	-	-	-
Ethiopia - CBPF Humanitarian Financing Unit	1,302,408	1,356,765	1,106,531	82%	-	-	-	-
Iraq - CBPF Humanitarian Financing Unit	1,365,500	1,387,454	1,173,167	85%	-	-	-	-
Jordan - CBPF Humanitarian Financing Unit	492,417	498,641	430,262	86%	-	-	-	-
Lebanon - CBPF Humanitarian Financing Unit	535,878	545,314	459,535	84%	-	-	-	-
Myanmar - CBPF Humanitarian Financing Unit	572,792	581,020	355,549	61%	-	-	-	-
Nigeria - CBPF Humanitarian Financing Unit	1,884,304	1,823,633	1,105,145	61%	-	-	-	-
OPT - CBPF Humanitarian Financing Unit	498,711	512,005	480,657	94%	-	-	-	-
Pakistan - CBPF Humanitarian Financing Unit	228,174	228,174	165,272	72%	-	-	-	-
Somalia - CBPF Humanitarian Financing Unit	2,009,638	2,043,642	1,778,486	87%	-	-	-	-
South Sudan - CBPF Humanitarian Financing Unit	2,387,200	2,421,483	2,130,379	88%	-	-	-	-
Sudan - CBPF Humanitarian Financing Unit	2,257,040	2,282,534	1,215,003	53%	-	-	-	-
Syria - CBPF Humanitarian Financing Unit	1,450,288	1,474,026	580,200	39%	-	-	-	-
Turkey - CBPF Humanitarian Financing Unit	2,414,523	3,173,769	1,949,758	61%	-	-	-	-
Ukraine - CBPF Humanitarian Financing Unit	527,696	521,035	407,231	78%	-	-	-	-
Venezuela - CBPF Humanitarian Financing Unit	-	192,248	29,083	15%	-	-	-	-
Yemen - CBPF Humanitarian Financing Unit	3,602,984	3,122,553	2,972,990	95%	-	-	-	-
ONE-OFF DECENTRALIZATION COSTS	4,152,497	4,152,497	2,516,704	61%	-	-	-	0%
DORMANT ACCOUNTS AND OTHERS	-	-	-99,380	0%	-	-	-1,587	0%
EXTRABUDGETARY ACTIVITIES INCLUDING CBPF, ONE-OFF DECENTRALIZATION, DORMANT AND OTHERS TOTAL	296,576,670	306,834,690	294,332,403	96%	34,708,395	34,708,394	34,382,153	99%
TOTAL OCHA ACTIVITIES (REGULAR BUDGET AND EXTRABUDGETARY)	313,857,070	323,612,344	311,333,111	96%	34,708,395	34,708,394	34,382,153	99%

DONOR RANKING SORTED BY (TOTAL)

DONOR RANKING FOR PROGRAMMATIC ACTIVITIES

Donor	OCHA Programme	Pass-through contributions	Total
MEMBER STATES			
United States	50,199,651	2,566,287	52,765,938
United Kingdom	35,570,915	184,275	35,755,190
Sweden	31,688,472	622,406	32,310,878
Germany	24,817,754	1,411,765	26,229,519
Norway	14,733,608	1,462,416	16,196,024
European Commission	12,840,836	-	12,840,836
Denmark	10,682,130	73,779	10,755,909
Canada	10,524,778	75,988	10,600,766
Qatar	10,357,995	-	10,357,995
Netherlands	7,658,643	1,310,000	8,968,643
Switzerland	7,879,218	531,350	8,410,568
Belgium	7,355,243	117,371	7,472,614
Australia	7,215,007	-	7,215,007
Japan	5,651,741	11,837	5,663,578
Ireland	4,278,388	-	4,278,388
Spain	4,152,045	-	4,152,045
France	3,532,009	-	3,532,009
New Zealand	3,415,301	-	3,415,301
Finland	2,805,836	-	2,805,836
Korea, Republic of	2,200,000	-	2,200,000
United Arab Emirates	2,000,000	-	2,000,000
Austria	1,323,604	-	1,323,604
Russian Federation	1,000,000	-	1,000,000
Luxembourg	987,316	-	987,316
Poland	748,390	-	748,390
Italy ¹	745,732	-	745,732
Estonia	579,471	22,222	601,693
Iceland	500,000	-	500,000
Saudi Arabia	500,000	-	500,000
Turkey	500,000	-	500,000
Romania	303,399	-	303,399
Greece	220,751	-	220,751
China	30,000	50,000	80,000
Portugal	46,948	-	46,948
Monaco	33,076	-	33,076
Brazil	-	27,699	27,699
Malta	27,594	-	27,594
Latvia	23,894	-	23,894
Singapore	20,000	-	20,000
Malaysia	15,000	-	15,000
Kazakhstan	10,000	-	10,000
OTHERS			
City of The Hague	-	493,949	493,949
FAO	-	75,000	75,000
IMC Worldwide Limited	-	38,610	38,610
Institute of Development Studies	-	19,404	19,404
Mainichi Shimbun, Japan	3,637	-	3,637
The Rockefeller Foundation	-	500,000	500,000
UNICEF	-	250,000	250,000
UPS Foundation	75,000	-	75,000
TOTAL	267,253,382	9,844,358	277,097,740

¹Including the transfers from Italy's pre-positioned fund.

CERF CONTRIBUTIONS

2020 DONOR INCOME TO CERF (US\$)

DONOR	AMOUNT
Germany	125,326,699
Netherlands	98,788,057
Sweden	88,826,881
United Kingdom	87,376,696
Norway	56,910,952
Denmark	30,787,345
Belgium	24,282,561
Switzerland	24,038,748
Canada	22,528,736
Finland	15,460,252
Ireland	11,415,525
New Zealand	8,338,312
Australia	8,184,524
Korea, Republic of	5,823,817
Italy	5,500,550
Luxembourg	5,470,460
United Arab Emirates	5,000,000
Spain	3,409,091
Russian Federation	1,500,000
Austria	1,216,545
France	1,137,656
Kuwait	1,000,000
Qatar	1,000,000
Iceland	708,324
China	500,000
Turkey	450,000
Japan	263,636
Poland	254,453
Indonesia	220,000
Liechtenstein	200,200
Portugal	192,519
Saudi Arabia	150,000
Estonia	111,111
Monaco	111,111
Turkmenistan	100,000
South Africa	85,305
Morocco	50,000
Philippines	50,000
Singapore	50,000
Andorra	41,347
Slovenia	35,253
Bangladesh	20,000
Cambodia	20,000
Thailand	20,000
Cyprus	16,502
Iran, Islamic Republic of	10,000
Mongolia	10,000
Myanmar	10,000
Pakistan	10,000
Sri Lanka	10,000
Viet Nam	10,000
Armenia	5,000
Montenegro	3,282
Guyana	3,000
Peru	2,936
Bhutan	1,500
Subtotal	637,048,884
Regional and local authorities	1,902,543
Others	96,653
Subtotal	1,999,197
GRAND TOTAL	639,048,081

CBPFs CONTRIBUTIONS

COUNTRY-BASED POOLED FUNDS: CONTRIBUTIONS BY DONOR AND FUND IN 2020 (US\$)

OCHA-managed
Multi-Partner Trust Fund Office managed

Donor	Recipient	Afghanistan	CAR ¹	DRC ²	Ethiopia	Iraq	Jordan	Lebanon	Myanmar	Nigeria
Germany		5,038,556	11,340,949	13,067,142	19,244,116	9,496,688	3,348,023	6,829,323	1,645,687	12,289,431
United Kingdom		29,010,900	7,426,800	4,025,700	15,151,515	4,675,902	2,484,472	-	1,930,502	-
Netherlands		4,311,804	1,847,735	10,256,650	-	-	-	-	-	5,090,498
Sweden		5,905,470	1,527,277	9,942,376	4,870,971	1,036,377	1,554,565	1,554,565	829,101	2,074,689
Belgium		-	-	10,031,471	-	4,343,105	-	5,109,273	-	5,428,882
Norway		1,613,062	-	1,076,724	1,038,929	-	-	-	-	2,890,467
Canada		2,743,089	1,445,083	4,575,744	2,878,524	744,816	729,927	-	1,522,574	646,088
Ireland		531,776	3,230,376	3,190,776	4,379,315	1,102,536	-	2,592,890	-	1,091,703
Denmark		-	-	-	3,209,758	-	-	2,254,622	-	-
Switzerland		2,099,900	1,911,854	-	1,595,735	1,062,699	-	1,003,009	1,605,825	2,129,687
Australia		5,864,837	-	-	-	-	-	-	4,089,791	-
France		-	-	-	-	-	-	-	-	-
Korea, Republic of		2,500,000	200,000	500,000	200,000	-	-	-	300,000	500,000
United States		-	-	-	8,000,000	-	-	-	2,000,000	-
Italy		-	579,345	-	613,497	597,372	880,282	1,184,834	-	-
Qatar		-	-	-	-	-	1,000,000	1,000,000	-	200,000
European Commission		-	-	-	-	-	-	-	-	-
Luxembourg		414,333	414,333	414,333	-	414,692	-	-	414,692	414,692
New Zealand		-	-	-	1,134,890	-	-	-	1,134,890	-
Spain		-	-	-	-	-	-	-	-	350,877
Finland		-	-	-	-	-	-	-	-	-
Iceland		235,183	-	-	-	-	-	351,167	-	-
Estonia		-	-	-	-	-	-	-	-	-
Slovakia		-	-	-	-	-	-	117,647	-	-
Lithuania		-	-	-	-	-	-	-	-	-
Bulgaria		-	-	-	-	-	-	-	-	-
Malaysia		-	-	-	-	-	-	-	-	-
Cyprus		-	-	-	-	-	12,500	12,500	-	-
Kazakhstan		50,000	-	-	-	-	-	-	-	-
Greece		-	-	-	-	-	-	-	-	-
Malta		-	-	-	-	-	-	-	-	-
Azerbaijan		-	-	-	-	-	-	-	-	-
Philippines		-	-	-	-	-	-	-	-	-
Jersey		-	373,014	-	-	-	-	-	-	-
Private Donations ³		3,091	3,333	20,814	9,156	9,648	98	312	39,452	6,898
UN, NGOs and other entities ⁴		-	-	-	-	-	-	-	1,000,000	-
GRAND TOTAL (US\$)		60,322,001	30,300,096	57,101,728	62,326,407	23,483,834	10,009,867	22,010,143	16,512,514	33,113,910

OCHA-managed
Multi-Partner Trust Fund Office managed

OPT ⁵	Pakistan	Somalia	South Sudan	Sudan	Syria Cross-border	Syria	Ukraine	Venezuela	Yemen	TOTAL
13,821,818	3,438,718	16,149,152	16,442,218	12,619,020	44,493,846	2,805,135	4,479,147	-	26,470,588	223,019,555
-	5,663,135	4,644,600	8,962,450	37,386,680	33,638,848	12,670,227	-	2,403,204	12,755,102	182,830,037
-	-	6,050,849	11,210,196	4,311,804	13,138,563	3,846,154	-	-	15,340,582	75,404,834
3,185,596	-	3,563,646	5,040,013	5,600,015	9,487,958	4,145,507	518,188	-	8,195,021	69,031,335
4,343,105	-	-	2,360,346	-	7,600,434	7,600,434	-	-	5,428,882	52,245,932
946,253	-	4,718,937	6,438,317	2,105,048	8,348,693	7,507,068	790,990	-	5,215,264	42,689,752
-	717,875	2,507,032	1,444,227	1,731,531	2,644,539	5,229,117	1,003,586	1,078,582	5,090,909	36,733,242
448,497	-	3,204,276	2,136,176	3,190,776	2,828,054	-	-	597,372	6,707,422	35,231,945
-	-	2,979,554	4,462,703	2,172,064	8,850,841	4,441,812	-	-	5,617,076	33,988,430
3,134,028	-	2,052,510	1,049,316	2,157,064	3,155,948	2,125,399	-	489,130	2,585,315	28,157,419
-	-	1,306,309	2,522,591	-	-	-	-	-	-	13,783,527
-	-	-	-	-	12,941,712	-	-	-	-	12,941,712
300,000	-	300,000	500,000	550,000	1,000,000	1,000,000	400,000	800,000	2,000,000	11,050,000
-	-	-	-	-	-	-	-	-	-	10,000,000
586,854	-	-	-	579,345	2,275,313	1,184,834	613,497	-	-	9,095,172
-	-	-	-	-	3,000,000	-	-	-	-	5,200,000
-	-	-	3,301,500	-	-	-	1,100,110	-	-	4,401,610
-	-	-	414,333	-	-	414,692	414,692	-	414,692	4,145,483
-	-	-	-	-	1,219,512	-	-	-	-	3,489,292
701,754	-	-	-	-	-	1,754,386	-	58,480	-	2,865,497
1,169,591	-	-	-	-	-	-	-	-	-	1,169,591
170,242	-	-	-	-	-	205,829	-	-	-	962,422
-	-	-	-	181,391	-	-	55,188	-	-	236,579
-	-	-	-	-	-	-	-	-	-	117,647
-	-	-	-	-	-	-	-	-	114,815	114,815
-	-	-	-	-	-	-	54,289	-	54,585	108,874
-	-	-	-	-	-	-	-	-	100,000	100,000
24,447	-	-	-	-	-	12,500	-	-	27,594	89,541
-	-	-	-	-	-	-	-	-	-	50,000
-	-	-	-	-	-	-	-	-	35,253	35,253
-	-	-	-	-	-	-	-	-	33,113	33,113
-	-	-	-	-	-	-	-	-	25,000	25,000
-	-	-	-	-	-	-	-	-	10,000	10,000
-	-	-	-	-	-	261,780	-	-	327,225	962,019
3,461	9	23,135	17,899	2,913	180	23,974	254	-	212,888	377,513
-	-	-	-	-	-	-	-	-	-	1,000,000
28,835,647	9,819,737	47,499,999	66,302,284	72,587,650	154,624,443	55,228,848	9,429,941	5,426,768	96,761,324	861,697,139

Totals include paid and pledged contributions.

Note: CBPF MPTF; source is GMS based on actual cash received while CBPF OCHA, source is OCT based on pledge value.

¹Central African Republic²Democratic Republic of the Congo³Includes funds received through UNF⁴Includes funds received UNOPS⁵Occupied Palestinian Territory